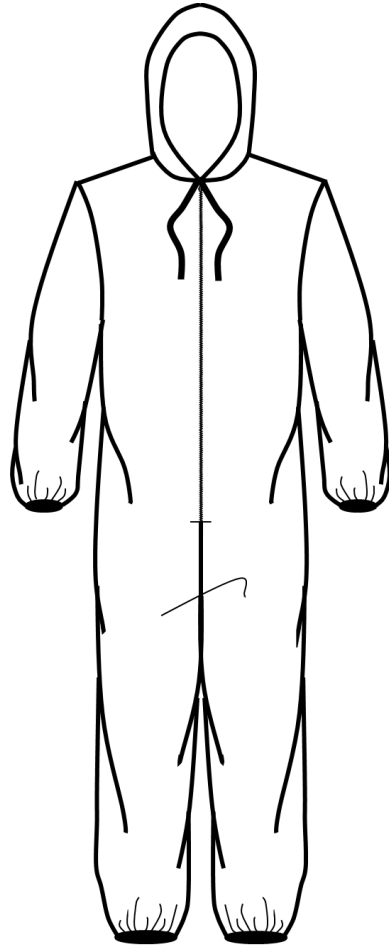


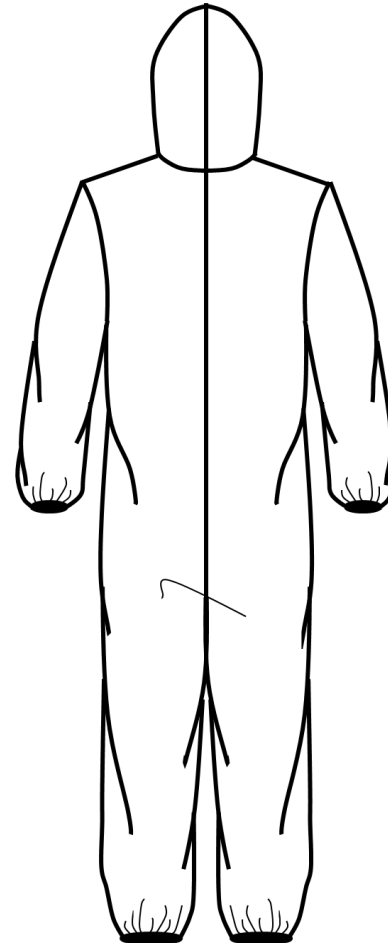
# PS-1 SUIT

DESIGN PAGE

STYLE NUMBER:	PS-1 SUIT	FABRICATION	NYLON TAFFETA SBL / TYVEK
DESCRIPTION:	REPLICATED PROTECTIVE SUIT	INITIATED BY:	MICH DULCE for MANILA PROTECTIVE GEAR SEWING CLUB
DATE:	MARCH 29, 2020	CREATED BY:	KENDI MARISTELA



FRONT



BACK

# PS-1 SUIT

# STYLE IMAGE REFERENCE

STYLE NUMBER:	PS-1 SUIT	FABRICATION	NYLON TAFFETA SBL / TYVEK
DESCRIPTION:	REPLICATED PROTECTIVE SUIT	INITIATED BY:	MICH DULCE for MANILA PROTECTIVE GEAR SEWING CLUB
DATE:	MARCH 29, 2020	CREATED BY:	KENDI MARISTELA



FRONT

BACK

SIDE

# PS-1 SUIT

# BILL OF MATERIALS

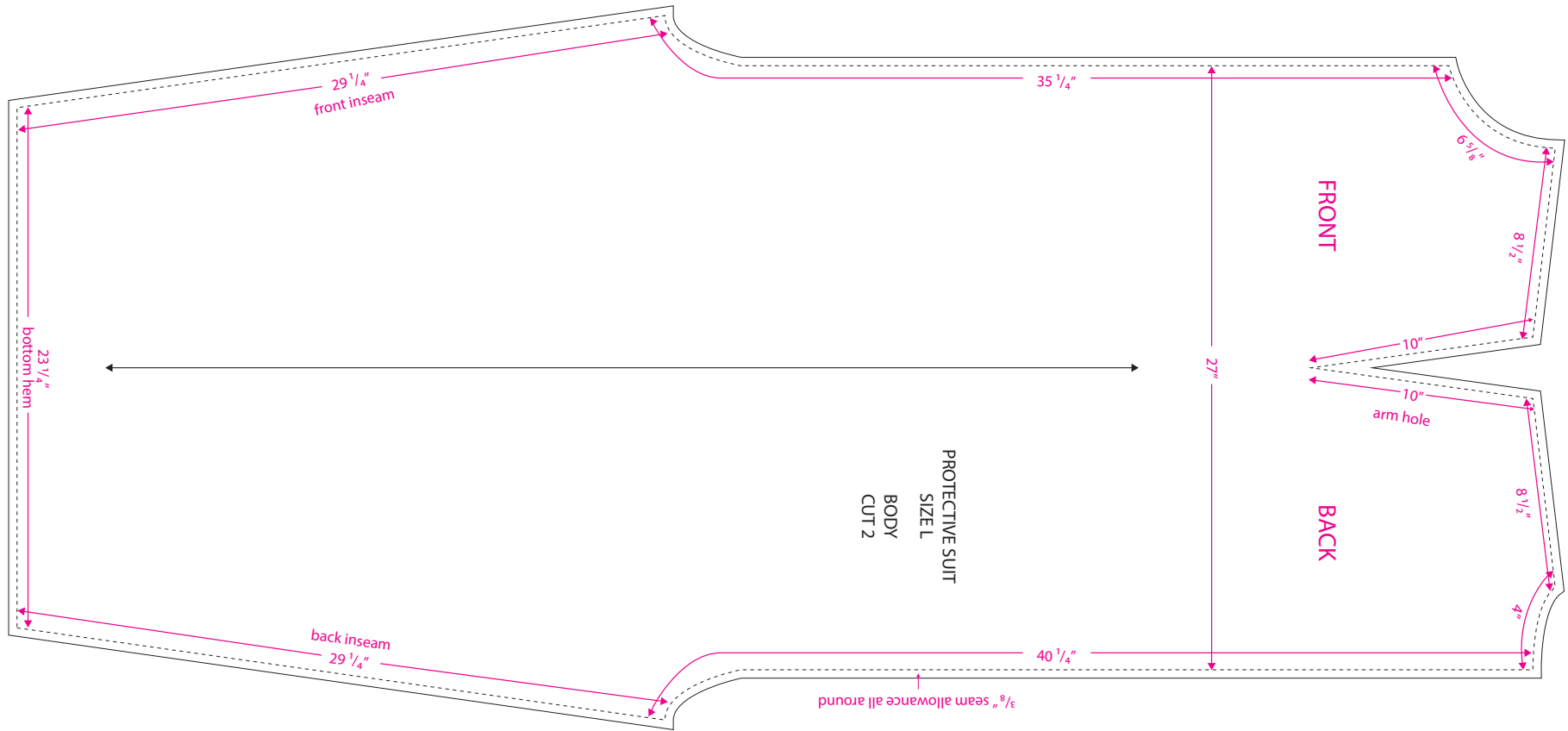
STYLE NUMBER:	PS-1 SUIT	FABRICATION	NYLON TAFFETA SBL / TYVEK
DESCRIPTION:	REPLICATED PROTECTIVE SUIT	INITIATED BY:	MICH DULCE for MANILA PROTECTIVE GEAR SEWING CLUB
DATE:	MARCH 29, 2020	CREATED BY:	KENDI MARISTELA

ITEM	PLACEMENT	COLOR	REMARKS
Fabric: TAFFETA SBL or TYVEK	Body, Sleeve, Hood	Not Specified	Materials should be able to resist soaking from blood and other fluids. Suggested alternative materials to create non medical grade suits are water repellant fabrics like <b>nylon tafetta SBL</b> , commonly used as fabric for umbrellas and raincoats, or <b>Tyvek</b> , a material used commonly for construction. These can be reused and disinfected. <b>Do a drop test with water to check if it will repel liquids.</b>
ZipPROTECTIVEr + ZipPROTECTIVEr Pull Tab	Centerfront, 26"	Match with fabric	Finished zip of 28" should be used, but if unavailable, a continious zip with pull may be used. If no zippers are available, there is a pattern uploaded that utilizes velcro to close securely.
1/4" Twill Tape (Flat) 41" long per suit	Draw String at Hood Centerfront	Match with fabric	Alternative materials: Bias tapes, shoelace, self-fabric bias tape, ribbon.
1/4" Rubber Elastic Tape	Sleeve hem Bottom Hem	Black/White	Alternative: 1/4" garter, 1/4" mobilon
Thread	Seams, zipPROTECTIVEr	Match with fabric	Notes: Use Tex size between Tex 24 to 30 only (or Tiket 80 to Tiket 120)

# PS-1 SUIT

# BODY PATTERN

STYLE NUMBER:	PS-1 SUIT	FABRICATION	NYLON TAFFETA SBL / TYVEK
DESCRIPTION:	REPLICATED PROTECTIVE SUIT	INITIATED BY:	MICH DULCE for MANILA PROTECTIVE GEAR SEWING CLUB
DATE:	MARCH 29, 2020	CREATED BY:	LEA EMPALMADO and AJ DIMARUCOT



# PS-1 SUIT

# HOOD PATTERN

STYLE NUMBER:

PS-1 SUIT

FABRICATION

NYLON TAFFETA SBL / TYVEK

DESCRIPTION:

REPLICATED PROTECTIVE SUIT

INITIATED BY:

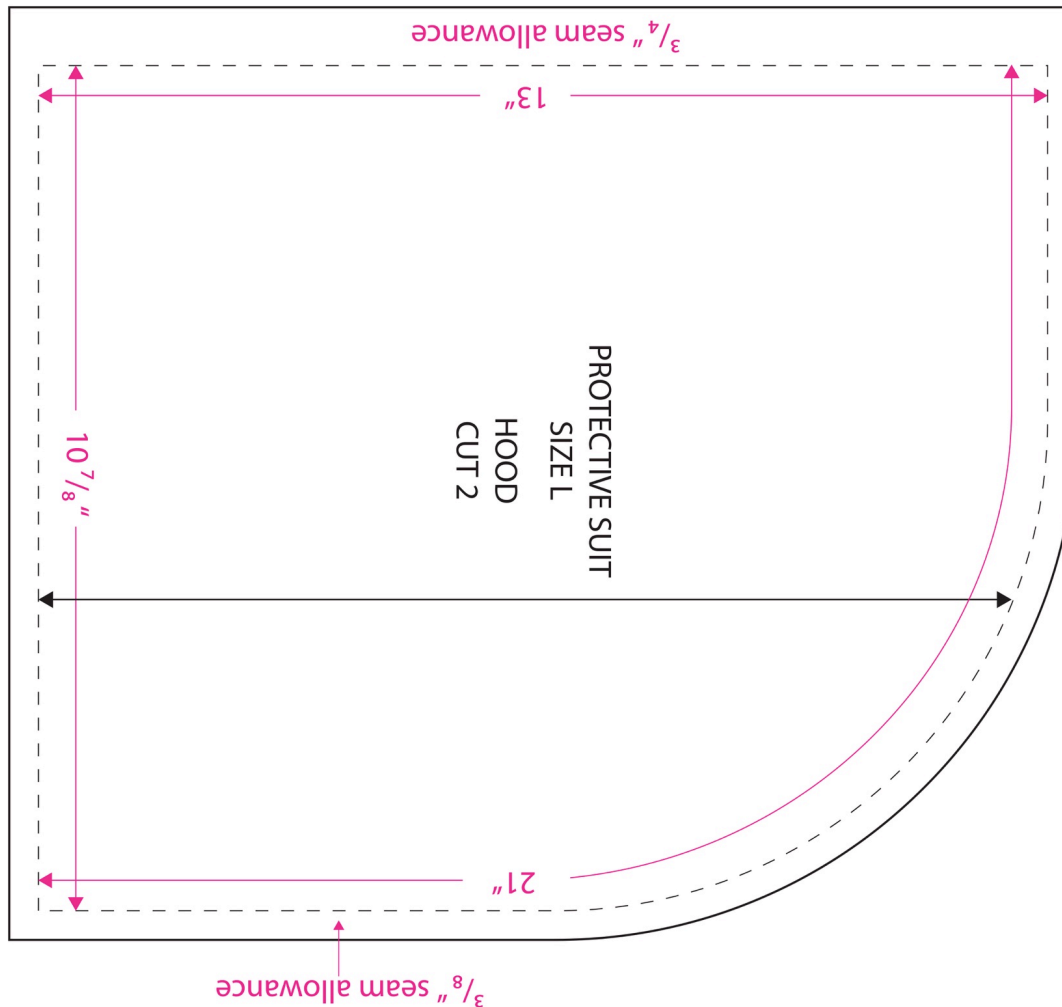
MICH DULCE for  
MANILA PROTECTIVE GEAR SEWING CLUB

DATE:

MARCH 29, 2020

CREATED BY:

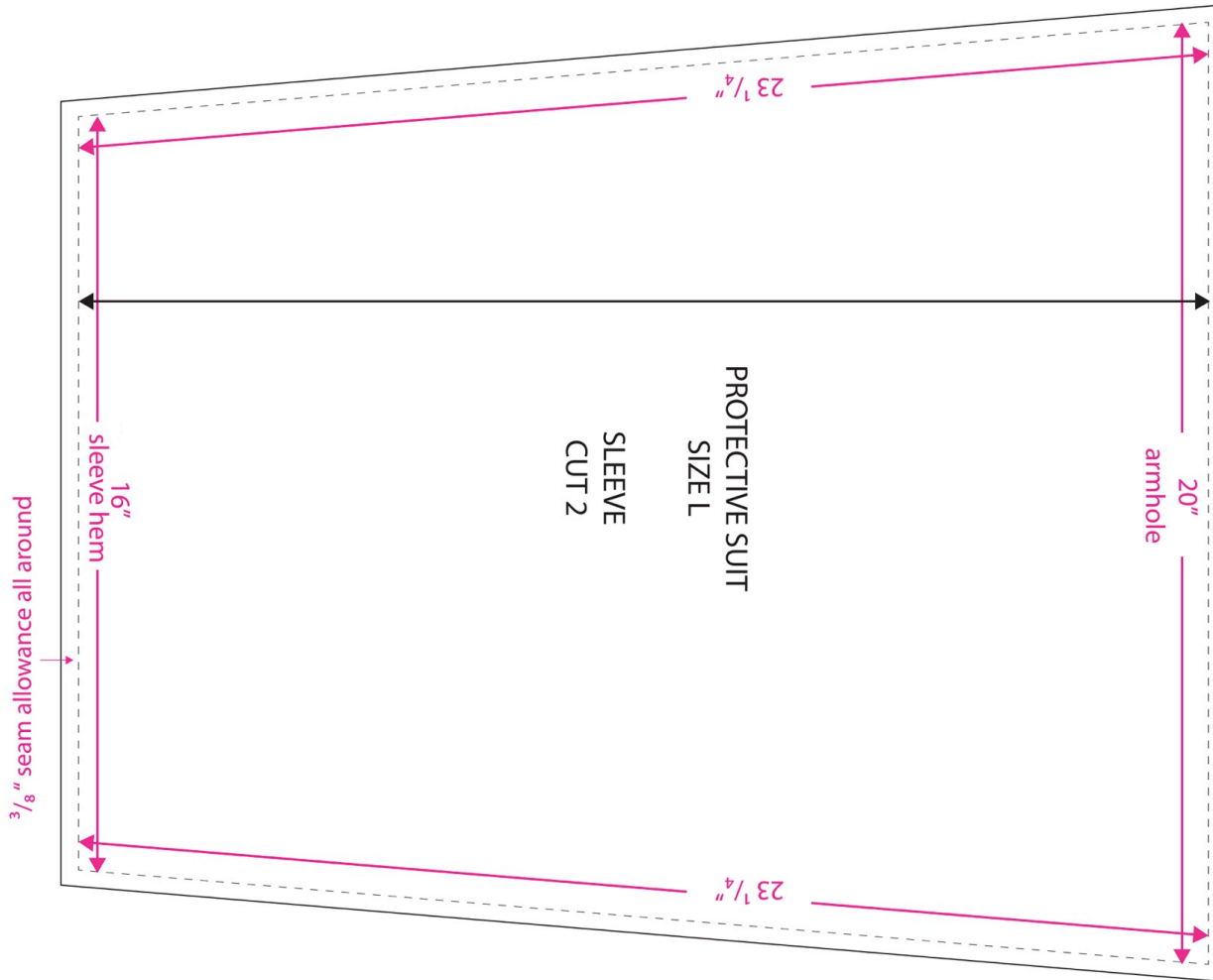
LEA EMPALMADO and AJ DIMARUCOT



# PS-1 SUIT

# SLEEVE PATTERN

STYLE NUMBER:	PS-1 SUIT	FABRICATION	NYLON TAFFETA SBL / TYVEK
DESCRIPTION:	REPLICATED PROTECTIVE SUIT	INITIATED BY:	MICH DULCE for MANILA PROTECTIVE GEAR SEWING CLUB
DATE:	MARCH 29, 2020	CREATED BY:	LEA EMPALMADO and AJ DIMARUCOT



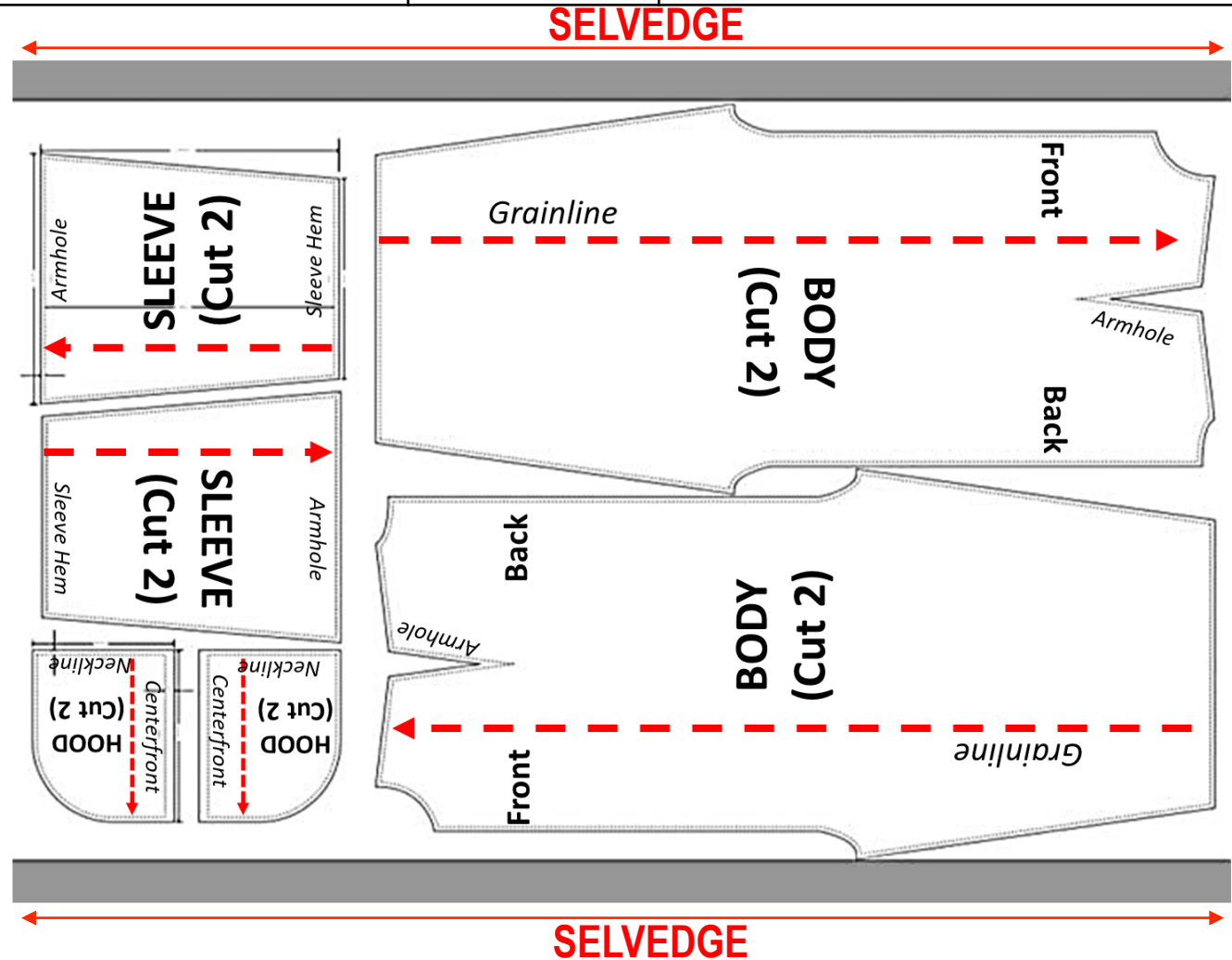
# PS-1 SUIT

# LAYOUT AND CUTTING

STYLE NUMBER:	PS-1 SUIT	FABRICATION	NYLON TAFFETA SBL / TYVEK
DESCRIPTION:	REPLICATED PROTECTIVE SUIT	INITIATED BY:	MICH DULCE for MANILA PROTECTIVE GEAR SEWING CLUB
DATE:	MARCH 29, 2020	CREATED BY:	KENDI MARISTELA

## Notes for Cutting and Layout:

1. Please stick to the advised layout of pattern on the fabric to maximized our materials. Layout for cutting is 2-way.
2. **PLEASE DO NOT PIN the pattern onto the fabric.** Use weights or clamps to secure the pattern onto the fabric lay/spread. **We are trying to avoid unnecessary holes.**
3. Cut using sharp shears/ rotary cutter only.
4. Please keep all endcuts (retaso) to be used for mask making.



STYLE NUMBER:	PS-1 SUIT	FABRICATION	NYLON TAFFETA SBL / TYVEK
DESCRIPTION:	REPLICATED PROTECTIVE SUIT	INITIATED BY:	MICH DULCE for MANILA PROTECTIVE GEAR SEWING CLUB
DATE:	MARCH 25, 2020	CREATED BY:	KENDI MARISTELA

**CONSTRUCTION DETAILS OF ACTUAL SAMPLE (Pages 9 – 14)  
MAY BE USED IF YOU HAVE THE FOLLOWING SPECIAL  
MACHINES:**

- 1. 3-Thread Overlock and/or**
- 2. 4-Thread Overlock**



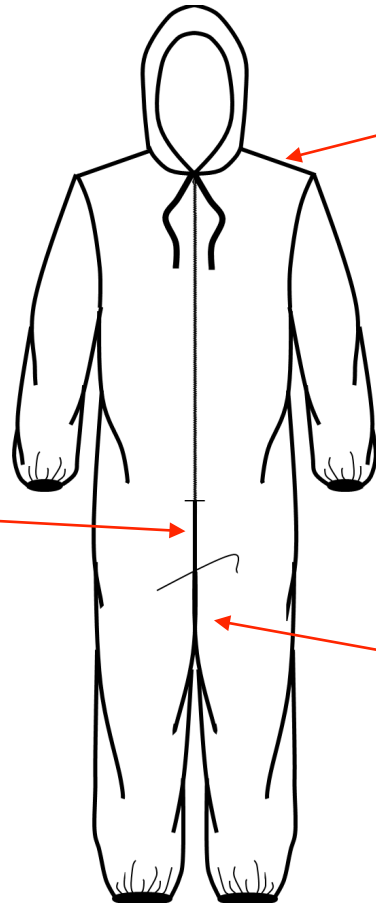
# PS-1 SUIT

# CONSTRUCTION DETAIL PAGE

STYLE NUMBER:	PS-1 SUIT	FABRICATION	NYLON TAFFETA SBL / TYVEK
DESCRIPTION:	REPLICATED PROTECTIVE SUIT	INITIATED BY:	MICH DULCE for MANILA PROTECTIVE GEAR SEWING CLUB
DATE:	MARCH 29, 2020	CREATED BY:	KENDI MARISTELA

## CONSTRUCTION DETAILS OF ACTUAL SAMPLE *(Apply if you have the special machines required)*

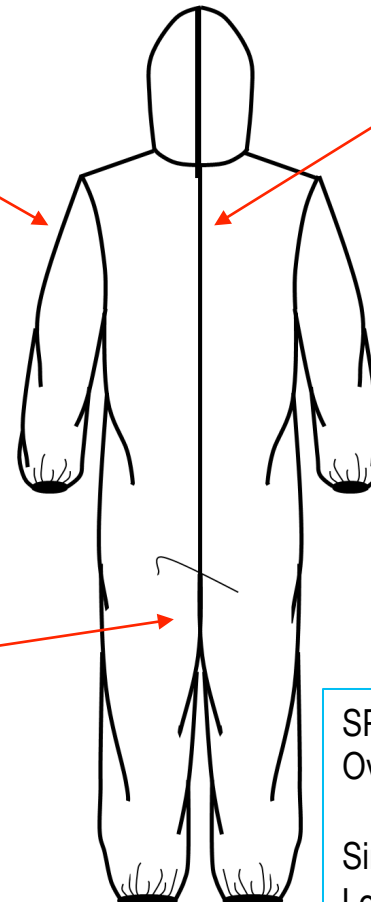
*Optional: You may add duct tape or secured adhesive tapes on all seams at the EXTERIOR SIDE. Apply only if the adhesive available will not tear after wash or any abrasion.*



**Centerfront Seam, ZIPROTECTIVE edge to Crotch:**  
Plain Seam, 301 Single Needle Lockstitch extended by 2" to back crotch for reinforcement

**Shoulder Seam and Sleeve Overarm:**  
504 Overedge (3-Thread Overlock) or 514 Overedge (4-Thread Overlock)

**Inseam:**  
504 Overedge (3-Thread Overlock) or 514 Overedge (4-Thread Overlock)



**Centerback Seam**  
504 Overedge (3-Thread Overlock) or 514 Overedge (4-Thread Overlock)

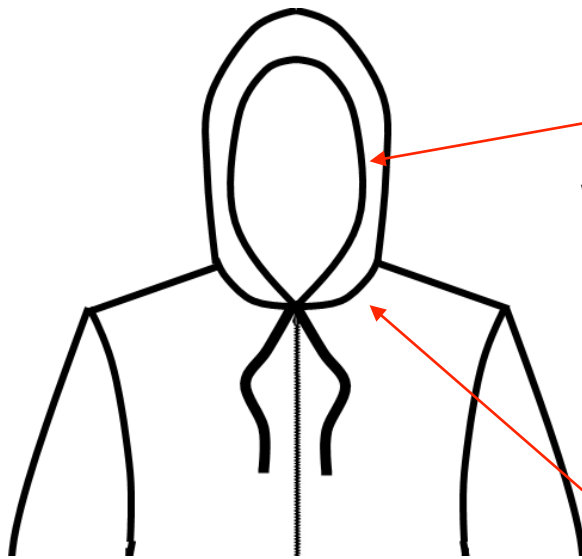
SPI:  
Overlock: 8-10 spi  
  
Single and Double Lockstitch: 6-8 spi

# PS-1 SUIT

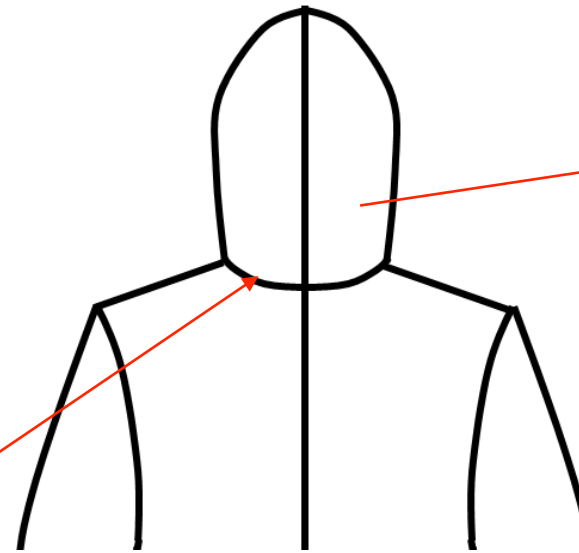
# CONSTRUCTION DETAIL PAGE

STYLE NUMBER:	PS-1 SUIT	FABRICATION	NYLON TAFFETA SBL / TYVEK
DESCRIPTION:	REPLICATED PROTECTIVE SUIT	INITIATED BY:	MICH DULCE for MANILA PROTECTIVE GEAR SEWING CLUB
DATE:	MARCH 29, 2020	CREATED BY:	KENDI MARISTELA

## CONSTRUCTION DETAILS OF ACTUAL SAMPLE *(Apply if you have the special machines required)*



**Hoodie Opening: 3/4"**  
Single Turnback  
with 1/4" Double  
Needle  
Edgestitch (see  
*next page*)



**Hood  
Centerback  
Seam:**  
Overedge (3-  
Thread  
Overlock) or  
514 Overedge  
(4-Thread  
Overlock)

**Neckline Seam  
(Attachment of  
Hood):** Overedge  
(3-Thread  
Overlock) or 514  
Overedge (4-  
Thread Overlock)

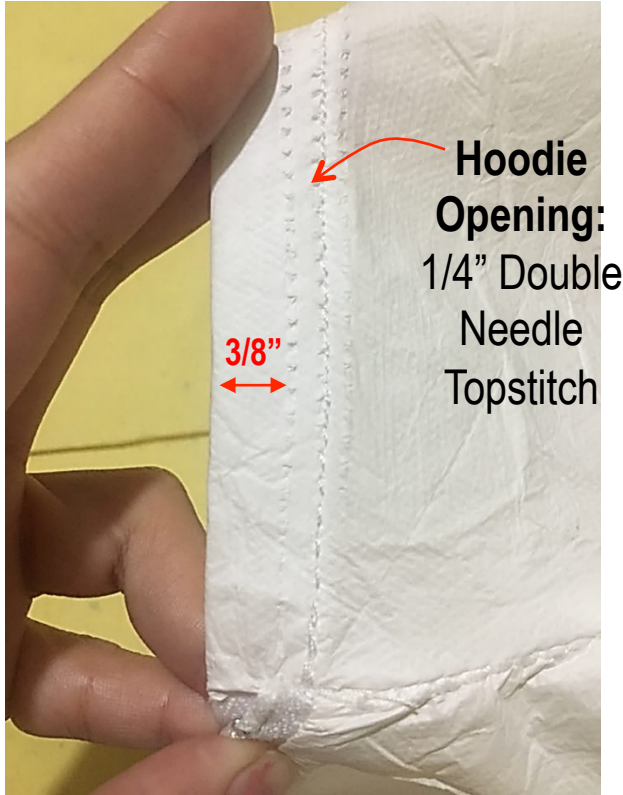
SPI:  
Overlock: 8-10 spi  
  
Single and Double  
Lockstitch: 6-8 spi

# PS-1 SUIT

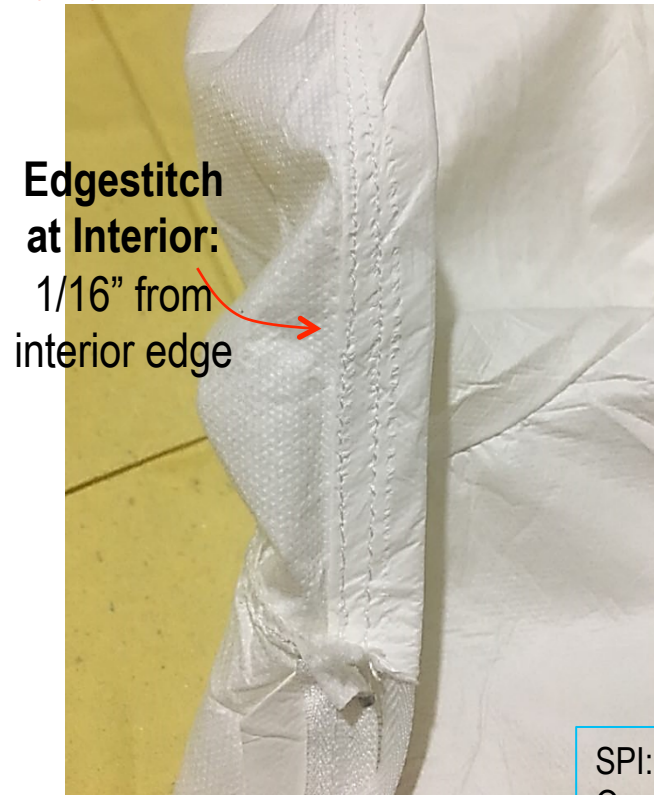
# CONSTRUCTION DETAIL PAGE

STYLE NUMBER:	PS-1 SUIT	FABRICATION	NYLON TAFFETA SBL / TYVEK
DESCRIPTION:	REPLICATED PROTECTIVE SUIT	INITIATED BY:	MICH DULCE for MANILA PROTECTIVE GEAR SEWING CLUB
DATE:	MARCH 29, 2020	CREATED BY:	KENDI MARISTELA

## CONSTRUCTION DETAILS OF ACTUAL SAMPLE *(Apply if you have the special machines required)*



**EXTERIOR VIEW**



**INTERIOR VIEW**

## HOOD OPENING

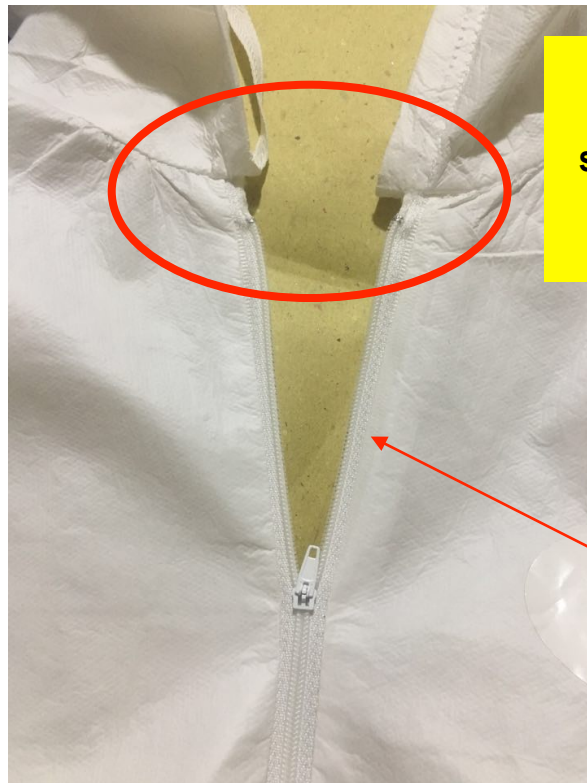
SPI:  
Overlock: 8-10 spi  
  
Single and Double  
Lockstitch: 6-8 spi

# PS-1 SUIT

# CONSTRUCTION DETAIL PAGE

STYLE NUMBER:	PS-1 SUIT	FABRICATION	NYLON TAFFETA SBL / TYVEK
DESCRIPTION:	REPLICATED PROTECTIVE SUIT	INITIATED BY:	MICH DULCE for MANILA PROTECTIVE GEAR SEWING CLUB
DATE:	MARCH 29, 2020	CREATED BY:	KENDI MARISTELA

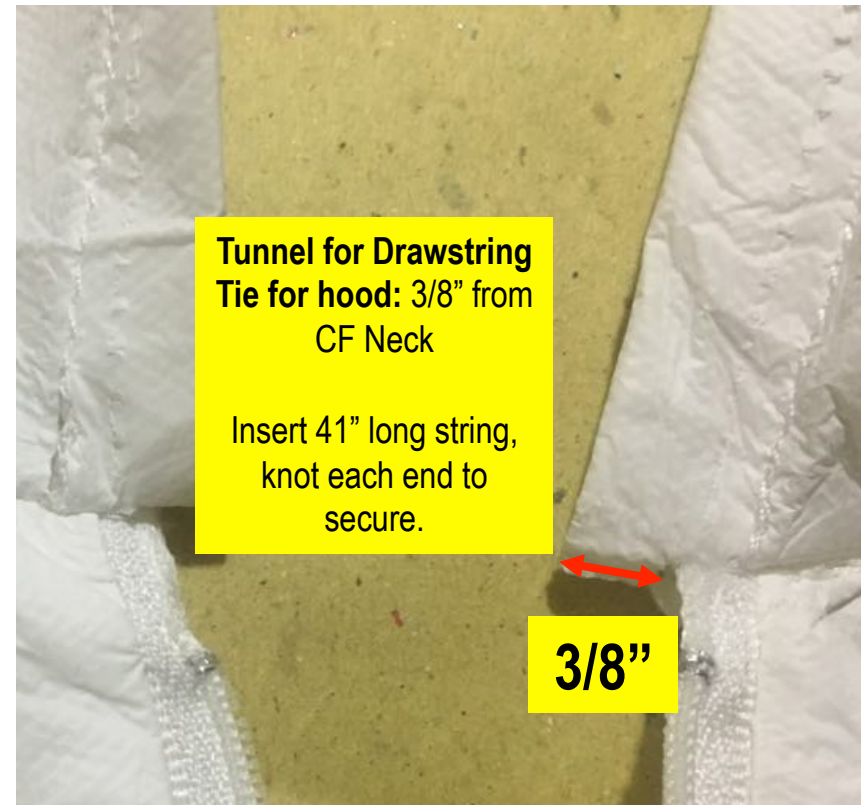
## CONSTRUCTION DETAILS OF ACTUAL SAMPLE *(Apply if you have the special machines required)*



Secure hood at CF neckline with 1/4" single lockstitch for reinforcement (bartack)

Attach ZIPROTECTIVER to body with:  
301 Single Needle Lockstitch

SPI:  
Overlock: 8-10 spi  
Single and Double Lockstitch: 6-8 spi



Tunnel for Drawstring Tie for hood: 3/8" from CF Neck

Insert 41" long string, knot each end to secure.

3/8"

## ZIPROTECTIVER

# PS-1 SUIT

# CONSTRUCTION DETAIL PAGE

STYLE NUMBER:	PS-1 SUIT	FABRICATION	NYLON TAFFETA SBL / TYVEK
DESCRIPTION:	REPLICATED PROTECTIVE SUIT	INITIATED BY:	MICH DULCE for MANILA PROTECTIVE GEAR SEWING CLUB
DATE:	MARCH 29, 2020	CREATED BY:	KENDI MARISTELA

## CONSTRUCTION DETAILS OF ACTUAL SAMPLE *(Apply if you have the special machines required)*

**Sleeve and Bottom Hem:** Overedge (3-Thread Overlock) or 514 Overedge (4-Thread Overlock) with Rubber Elastic or Mobilon Insert



**EXTERIOR VIEW**

Measurement on Flat (Relax):

**Sleeve hem: 4"**  
**Bottom Hem: 5 1/2"**

Full Opening Measurement:  
**Sleeve Hem: 8"**  
**Bottom Hem: 11"**



**INTERIOR VIEW**

## SLEEVE AND BOTTOM HEM

SPI:  
Overlock: 8-10 spi  
  
Single and Double  
Lockstitch: 6-8 spi

# PS-1 SUIT

# OPERATIONS BREAKDOWN (ASSEMBLY)

STYLE NUMBER:	PS-1 SUIT	FABRICATION	NYLON TAFFETA SBL / TYVEK
DESCRIPTION:	REPLICATED PROTECTIVE SUIT	INITIATED BY:	MICH DULCE for MANILA PROTECTIVE GEAR SEWING CLUB
DATE:	MARCH 29, 2020	CREATED BY:	KENDI MARISTELA

## **CONSTRUCTION DETAILS OF ACTUAL SAMPLE** (*Apply if you have the special machines required*)

### **Operations Breakdown (Assembly):**

1. Join Front and Back body at Inseam with 504 or 514 overedge with 3/8" sewing allowance.
2. Attach sleeve to body (with seam at the overarm) with 504 or 514 overedge with 3/8" sewing allowance.
3. Close the shoulder seam and sleeve overarm seam continuously from neckline to sleeve hem with 504 or 514 overedge with 3/8" sewing allowance.
4. Join centerback seam up to the ziPROTECTIVEr bottom edge placement at centerfront with 504 or 514 overedge with 3/8" sewing allowance.
5. Attach 26" ZiPROTECTIVEr at centerfront with 301 single needle lockstitch with 3/8" sewing allowance.
6. Hood: Join left and right hood at centerback with 301 single needle lockstitch with 3/8" sewing allowance. Finish hood opening with 1/2" single turnback/fold, 1/4" double needle edgestitch leaving a 3/8 wide tunnel for drawstring. Insert 41"-long drawstring. Knot the end of the string to secure:
7. Attach hood to neckline with 504 or 514 overedge with 3/8" sewing allowance. Secure hood at CF neckline with 1/4" single lockstitch/reinforcement stitch (bartack).
8. Finish hem with 504 or 514 overedge with 3/8" sewing allowance with Rubber Elastic Tape or mobilon insert. Elastic length- (a) Sleeve Hem: 8" long plus 3/8" allowance on each end; (b) Bottom hem: 11" plus 3/8" allowance on each end.

**\*\*nothing follows\*\***

STYLE NUMBER:	PS-1 SUIT	FABRICATION	NYLON TAFFETA SBL / TYVEK
DESCRIPTION:	REPLICATED PROTECTIVE SUIT	INITIATED BY:	MICH DULCE for MANILA PROTECTIVE GEAR SEWING CLUB
DATE:	MARCH 29, 2020	CREATED BY:	KENDI MARISTELA

**IF THE AVAILABLE MACHINE IS LIMITED TO LOCKSTITCH ONLY (HI-SPEED OR PORTABLE), THE CONSTRUCTION DETAILS FOR THE DIY PROTECTIVE SUIT APPLY.  
(Pages 16-21)**

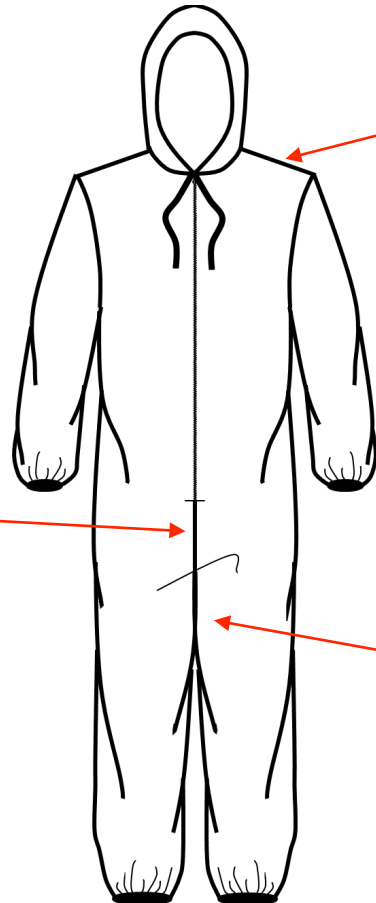
# PS-1 SUIT

# CONSTRUCTION DETAIL PAGE

STYLE NUMBER:	PS-1 SUIT	FABRICATION	NYLON TAFFETA SBL / TYVEK
DESCRIPTION:	REPLICATED PROTECTIVE SUIT	INITIATED BY:	MICH DULCE for MANILA PROTECTIVE GEAR SEWING CLUB
DATE:	MARCH 29, 2020	CREATED BY:	KENDI MARISTELA

## RECOMMENDED CONSTRUCTION DETAILS FOR DIY PROTECTIVE (Apply if available machine is SINGLE LOCKSTITCH)

*Optional: You may add duct tape or secured adhesive tapes on all seams at the EXTERIOR SIDE. Apply only if the adhesive available will not tear after wash or any abrasion.*

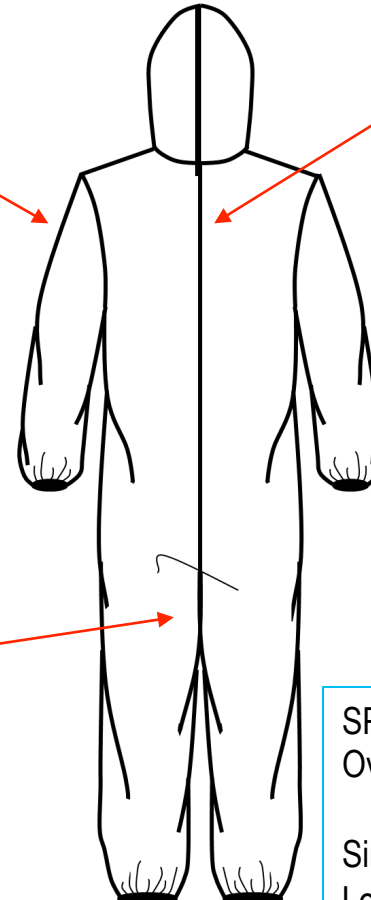


**Centerfront Seam, PROTECTIVE edge to Crotch:**  
Plain Seam, 301 Single Needle Lockstitch

Reinforce with 301 Single Needle Lockstitch 2" to the back crotch and 2" to the front crotch

**Shoulder Seam and Sleeve Overarm:**  
Plain Seam, 301 Single Needle Lockstitch

**Inseam:**  
Plain Seam, 301 Single Needle Lockstitch



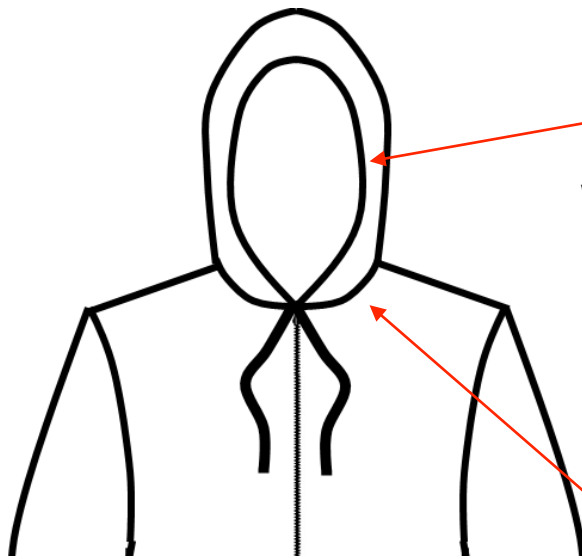
**Centerback Seam**  
Plain Seam, 301 Single Needle Lockstitch

SPI:  
Overlock: 8-10 spi  
  
Single and Double Lockstitch: 6-8 spi



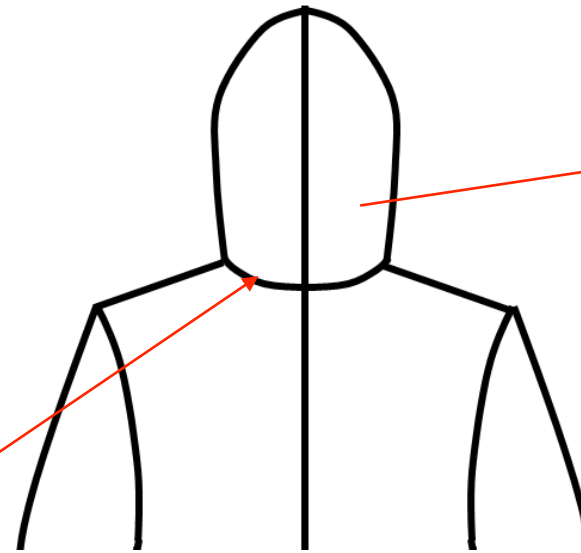
STYLE NUMBER:	PS-1 SUIT	FABRICATION	NYLON TAFFETA SBL / TYVEK
DESCRIPTION:	REPLICATED PROTECTIVE SUIT	INITIATED BY:	MICH DULCE for MANILA PROTECTIVE GEAR SEWING CLUB
DATE:	MARCH 29, 2020	CREATED BY:	KENDI MARISTELA

**RECOMMENDED CONSTRUCTION DETAILS FOR DIY PROTECTIVE (Apply if available machine is SINGLE LOCKSTITCH)**



**Hoodie Opening:** 3/4"  
Single Turnback with 1/4" Double Needle Edgestitch (see next page)

**Neckline Seam (Attachment of Hood):** Plain Seam, 301 Single Needle Lockstitch



**Hood Centerback Seam:** Plain Seam, 301 Single Needle Lockstitch

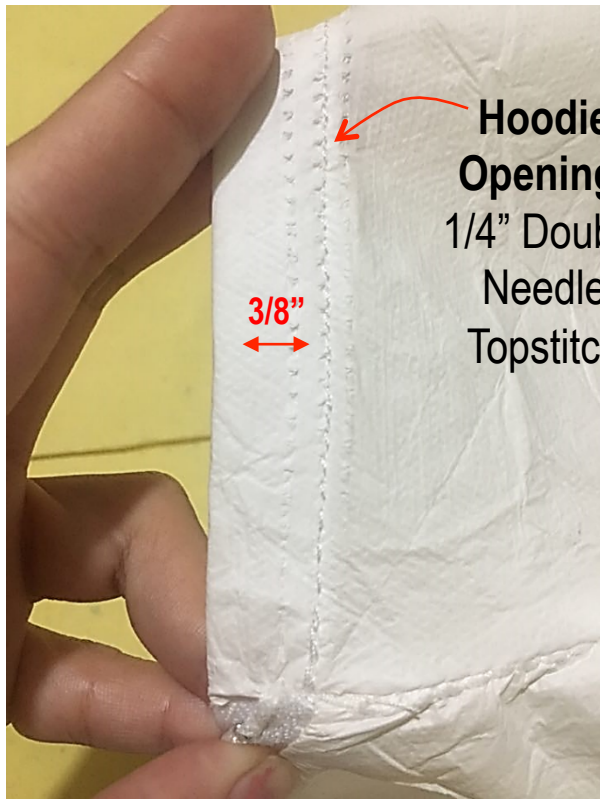
SPI:  
Overlock: 8-10 spi  
  
Single and Double Lockstitch: 6-8 spi

# PS-1 SUIT

# CONSTRUCTION DETAIL PAGE

STYLE NUMBER:	PS-1 SUIT	FABRICATION	NYLON TAFFETA SBL / TYVEK
DESCRIPTION:	REPLICATED PROTECTIVE SUIT	INITIATED BY:	MICH DULCE for MANILA PROTECTIVE GEAR SEWING CLUB
DATE:	MARCH 29, 2020	CREATED BY:	KENDI MARISTELA

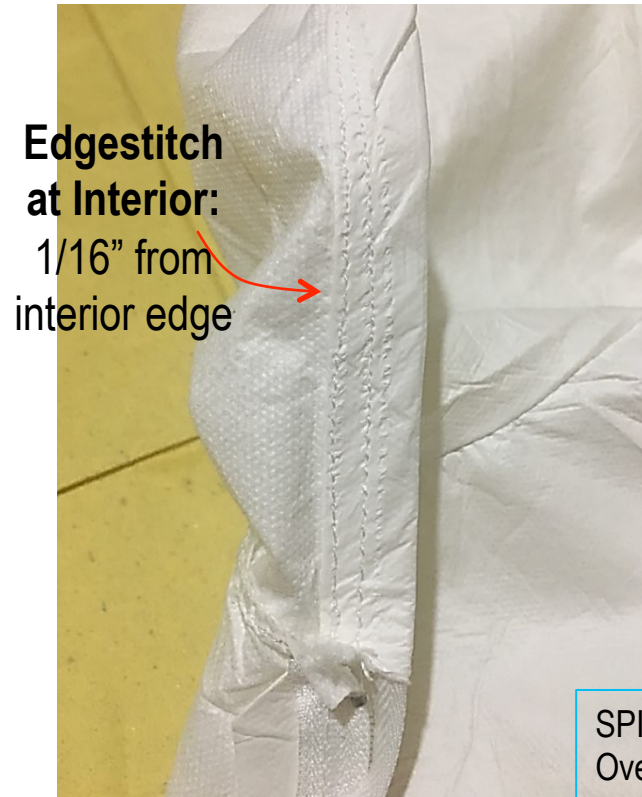
## RECOMMENDED CONSTRUCTION DETAILS FOR DIY PROTECTIVE (Apply if available machine is SINGLE LOCKSTITCH)



**Hoodie  
Opening:**  
1/4" Double  
Needle  
Topstitch

3/8"

EXTERIOR VIEW



**Edgestitch  
at Interior:**  
1/16" from  
interior edge

INTERIOR VIEW

SPI:  
Overlock: 8-10 spi

Single and Double  
Lockstitch: 6-8 spi

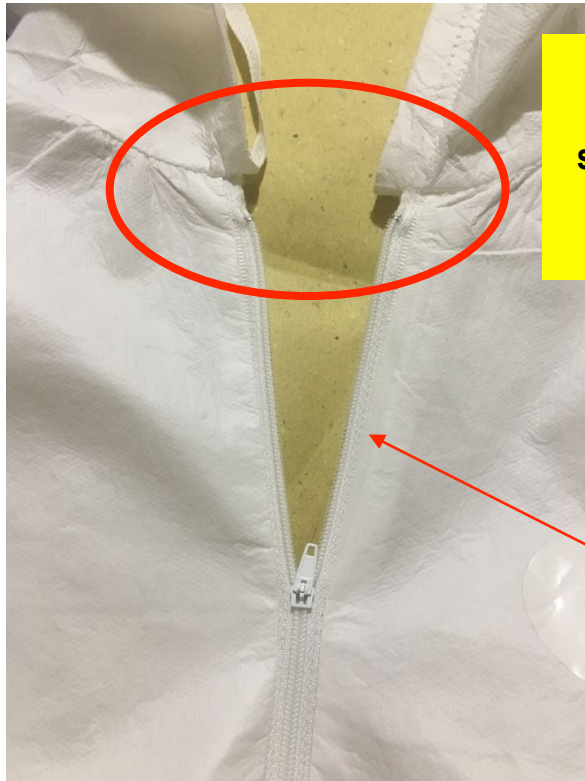
## HOOD OPENING

# PS-1 SUIT

# CONSTRUCTION DETAIL PAGE

STYLE NUMBER:	PS-1 SUIT	FABRICATION	NYLON TAFFETA SBL / TYVEK
DESCRIPTION:	REPLICATED PROTECTIVE SUIT	INITIATED BY:	MICH DULCE for MANILA PROTECTIVE GEAR SEWING CLUB
DATE:	MARCH 29, 2020	CREATED BY:	KENDI MARISTELA

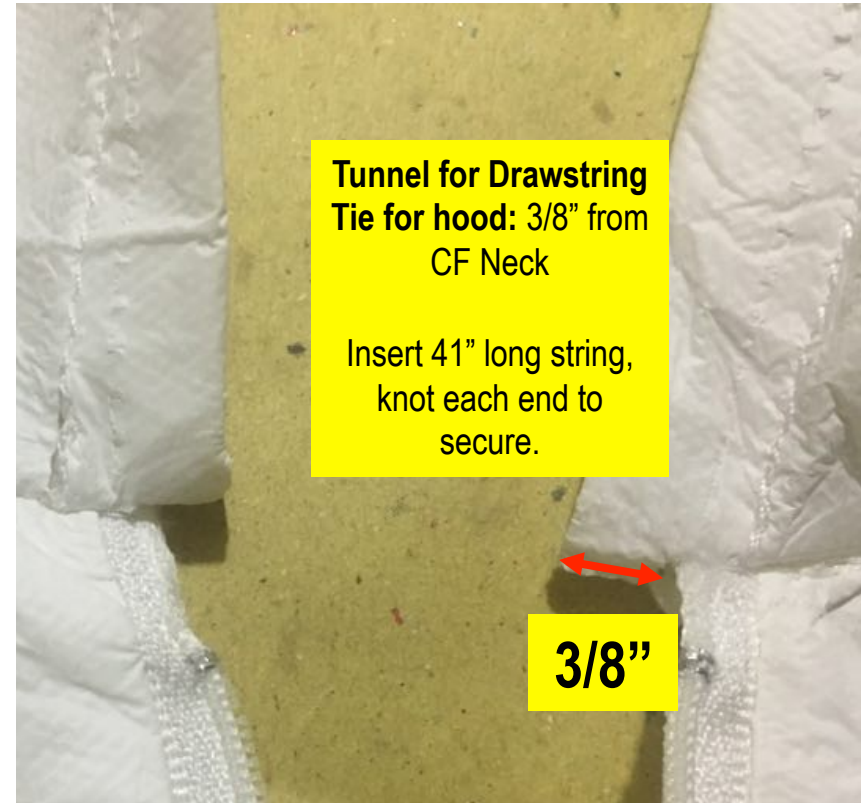
## RECOMMENDED CONSTRUCTION DETAILS FOR DIY PROTECTIVE (Apply if available machine is SINGLE LOCKSTITCH)



Secure hood at CF neckline with 1/4" single lockstitch for reinforcement (bartack)

Attach ZIPROTECTIVER to body with:  
301 Single Needle Lockstitch

SPI:  
Overlock: 8-10 spi  
Single and Double Lockstitch: 6-8 spi



Tunnel for Drawstring Tie for hood: 3/8" from CF Neck

Insert 41" long string, knot each end to secure.

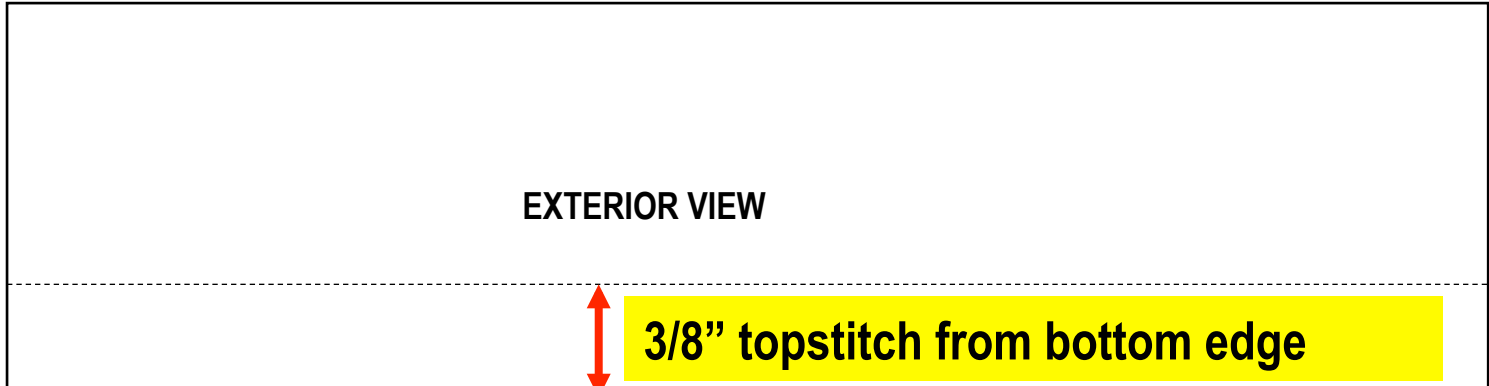
3/8"

## ZIPROTECTIVER

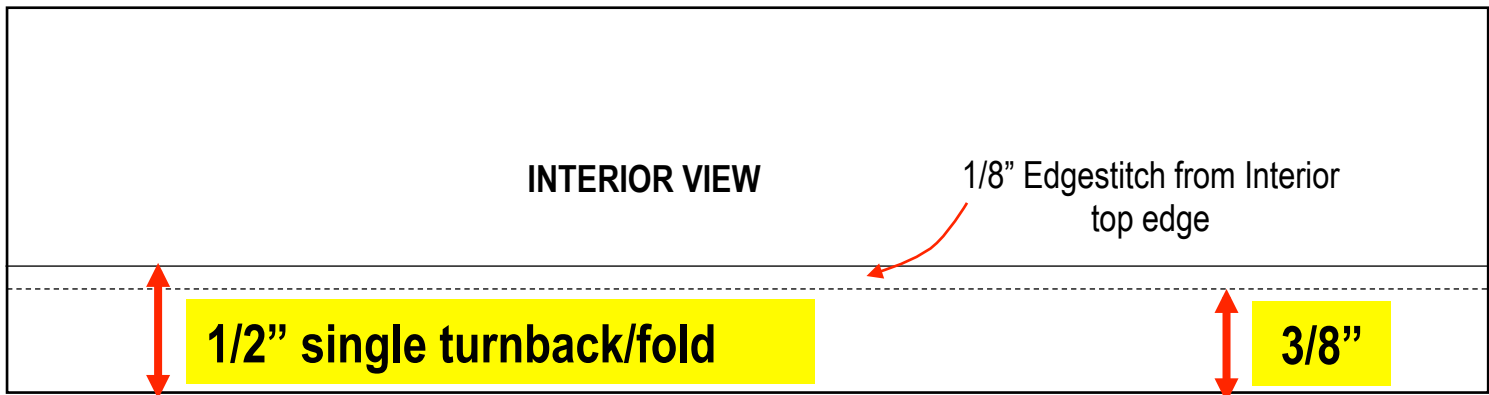
STYLE NUMBER:	PS-1 SUIT	FABRICATION	NYLON TAFFETA SBL / TYVEK
DESCRIPTION:	REPLICATED PROTECTIVE SUIT	INITIATED BY:	MICH DULCE for MANILA PROTECTIVE GEAR SEWING CLUB
DATE:	MARCH 29, 2020	CREATED BY:	KENDI MARISTELA

**RECOMMENDED CONSTRUCTION DETAILS FOR DIY PROTECTIVE (Apply if available machine is SINGLE LOCKSTITCH)**

**Sleeve and Bottom Hem:**  
1/2" Single Turnback with 3/8" Topstitch with elastic/garter insert



Measurement on Flat (Relax):  
**Sleeve hem: 4"**  
**Bottom Hem: 5 1/2"**



Full Opening Measurement:  
**Sleeve Hem: 8"**  
**Bottom Hem: 11"**

## SLEEVE AND BOTTOM HEM

# PS-1 SUIT

# OPERATIONS BREAKDOWN (ASSEMBLY)

STYLE NUMBER:	PS-1 SUIT	FABRICATION	NYLON TAFFETA SBL / TYVEK
DESCRIPTION:	REPLICATED PROTECTIVE SUIT	INITIATED BY:	MICH DULCE for MANILA PROTECTIVE GEAR SEWING CLUB
DATE:	MARCH 29, 2020	CREATED BY:	KENDI MARISTELA

## **RECOMMENDED CONSTRUCTION DETAILS FOR DIY PROTECTIVE (Apply if available machine is SINGLE LOCKSTITCH)**

### **Operations Breakdown (Assembly):**

1. Join Front and Back body at Inseam with 301 single needle lockstitch with 3/8" sewing allowance.
2. Attach sleeve to body (with seam at the overarm) with 301 single needle lockstitch with 3/8" sewing allowance.
3. Close the shoulder seam and sleeve overarm seam continuously from neckline to sleeve hem with 301 single needle lockstitch with 3/8" sewing allowance.
4. Join centerback seam up to the ziPROTECTIVEr bottom edge placement at centerfront with 301 single needle lockstitch with 3/8" sewing allowance.
5. Attach 26" ZiPROTECTIVEr at centerfront with 301 single needle lockstitch with 3/8" sewing allowance.
6. Hood: Join left and right hood at centerback with 301 single needle lockstitch with 3/8" sewing allowance. Finish hood opening with 1/2" single turnback/fold, 1/4" double needle edgestitch leaving a 3/8 wide tunnel for drawstring. Insert 41"-long drawstring. Knot the end of the string to secure:
7. Attach hood to neckline with 301 single needle lockstitch with 3/8" sewing allowance. Secure hood at CF neckline with 1/4" single lockstitch/reinforcement stitch (bartack).
8. Finish sleeve hem and bottom hem with 1/2" Single Turnback with 3/8" Topstitch with elastic/garter insert. Garter length- (a) Sleeve Hem: 8" long plus 3/8" allowance on each end; (b) Bottom hem: 11" plus 3/8" allowance on each end.

*\*\*nothing follows\**

# PS-1 SUIT

# FOLDING

STYLE NUMBER:	PS-1 SUIT	FABRICATION	NYLON TAFFETA SBL / TYVEK
DESCRIPTION:	REPLICATED PROTECTIVE SUIT	INITIATED BY:	MICH DULCE for MANILA PROTECTIVE GEAR SEWING CLUB
DATE:	MARCH 29, 2020	CREATED BY:	KENDI MARISTELA



**1. Place garment face up. Fold hood inward to the front side**



**2. Fold garment into half vertically matching the sleeves.**



**3. Fold sleeves inward.**



**4. Fold garment in half, hem going upwards.**



**5. Fold again to neckline.**

## VERTICAL QUARTER FOLD